

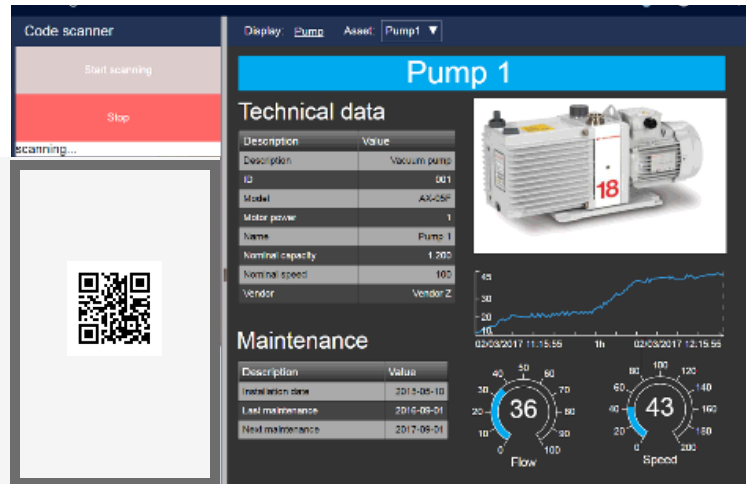
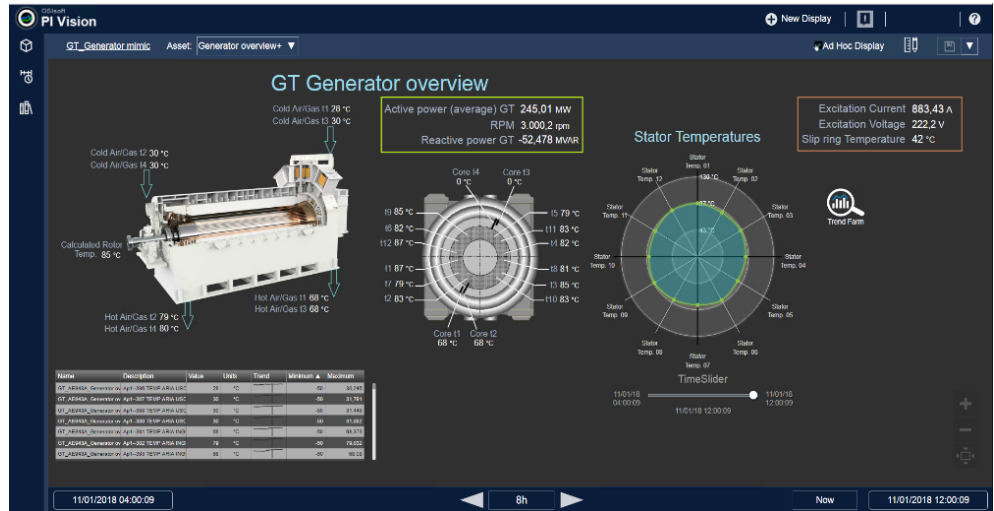
## @ a glance

PI Vision® is an intuitive web-based application that you can use to retrieve, monitor, and analyze PI System® data. You can create your own displays that visualize PI System data and access the displays from the PI Vision home page and can share them with others. e-matica developed PI Vision Widgets; a list is available here but it is continuing to grow. Visit: [www.e-matica.it](http://www.e-matica.it) to know more and meet new PI Vision Widgets.

## Key benefits

- Design easily and proficiently effective web pages and dashboards to improve the operators action and achieve better results
- Plug & play graphical components, the Widgets easily apply to your PI System infrastructure, associated to the PI AF implementation
- A holistic asset view will empower your people
- Centralized management of asset information

e-matica is also available for its extensive knowledge to improve your asset management strategy through the PI AF implementation or revision, including the beauty of useful PI Vision Widgets.



Go to the website and stay updated



The above images show how it is possible to feature assets in the PI Vision portal to see real-time data, trends or KPI in the same view. For the standard PI System product features it is also possible share a view with a colleague, if security and permission allow for the web page sharing.

In the first image a PI Vision Widget, the Polar Diagram, shows the alternator stator temperatures distributed along the circumference, to identify hot spots and prevent a trip or an insulation damage due to the local high temperatures. In the second one, the user scans the code printed on the asset by simply taking a picture with the embedded camera of a common tablet or mobile phone. PI Vision will show asset related information.

Information can be real-time data collected in the PI System, configuration parameters and asset meta-data, documentation (pdf, images, etc..) or contextualized links to resources on other systems (SAP, etc.)

Several PI Widgets from e-matica are available (next page) and more will be developed. Have a PI Vision graphical integration need? Just ask e-matica and you'll be all set! All Widgets are compatible with OSIsoft PI Vision 2018 and forward.

## Tree view

- ▼ Westeros Hydro
  - ▼ Group 1
    - ◆ Dam A
    - ◆ Dam B
    - ◆ Dam C
    - ◆ Dam D
  - ▶ Group 2

## Augmented Reality viewer



## QR Code reader

Code scanner

Start scanning

Technical data

**Pump 1**

Description: Value

Equipment: Value

Make: Value

Water power: Value

Brand: Value

Volume capacity: Value

Volume speed: Value

Motor: Value

Maintenance

Description: Value

Installation date: Value

Last maintenance: Value

Next maintenance: Value

36

43

Speed

## Event Table

Event Table: Dam Winterfell

Start time	End time	Comment	User	Trend	Table
13/09/2017 23:00:00		Open	Jon S.		
13/09/2017 23:00:00		Open	Jon S.		
15/09/2017 15:15:24		Open	Jon S.		

## Manual Data Entry

AF Element: \\PI-DEMO\Group

Attribute: Test\_AnalysisInput

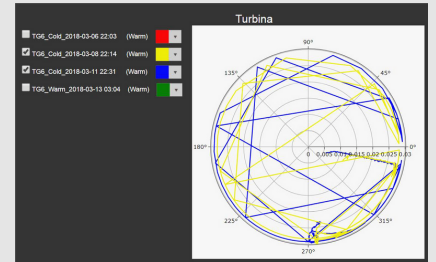
Current Value(Double) 85,76

New Value(Double) 85,76

Date time 27/10/2017

**CONFIRM**

## Polar Chart



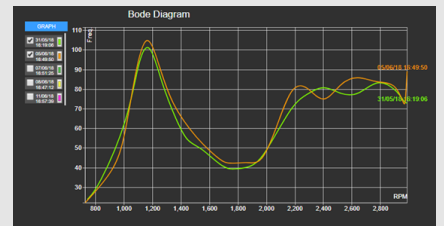
## Alarm Table

Description	Time stamp	Alarms
Hydro area of Westeros	-	12

Description	Time stamp	Alarms
Winterfell Plant	-	0
Harrenhal Plant	-	0
Riverrun Plant	-	0
Pyke Plant	-	0
Oldtown Plant	-	0

## Bode Chart



## On line calculation

Input attribute	Value
Dam	0
Level	79,33
Height (meter)	0

**CALCULATE**

Output attribute	Value
Result	0

## Event Insert

Insert Event Frame

Comment:

Start Date:

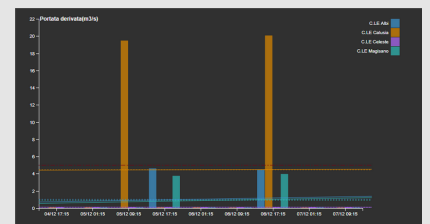
End Date:

**Start** **Stop** **Clear**

## Advanced Data Table

Timestamp	InvasoLivello	InvasoPunta	InvasoSforamento
18/05/2017 12:00:00	49,171	60	48,656
18/05/2017 12:30:00	61,15	60	53,979
18/05/2017 13:00:00	73,13	60	68,742
18/05/2017 13:30:00	85,109	60	87,683
18/05/2017 14:00:00	91,633	60	101,141
18/05/2017 14:30:00	97,639	60	118,308
18/05/2017 15:00:00	98,423	60	131,553
18/05/2017 15:30:00	97,918	60	140,862

## Column Chart



## Link I-frame

PI Vision

Search All Displays

Filter by keywords

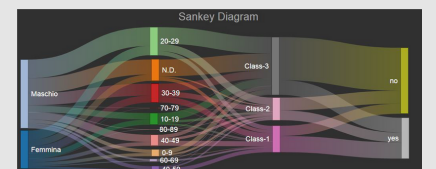
All Displays

Favorites

My Displays

Recent

## Sankey Chart



## Advanced Gantt

I Central	Programmed closure
il Central	Start fail
Central	External cause
ntral	Start fail
Central	External cause
rt Central	Start fail

00:00 04:00 08:00 12:00

Thu 7 September

## Radar Chart

