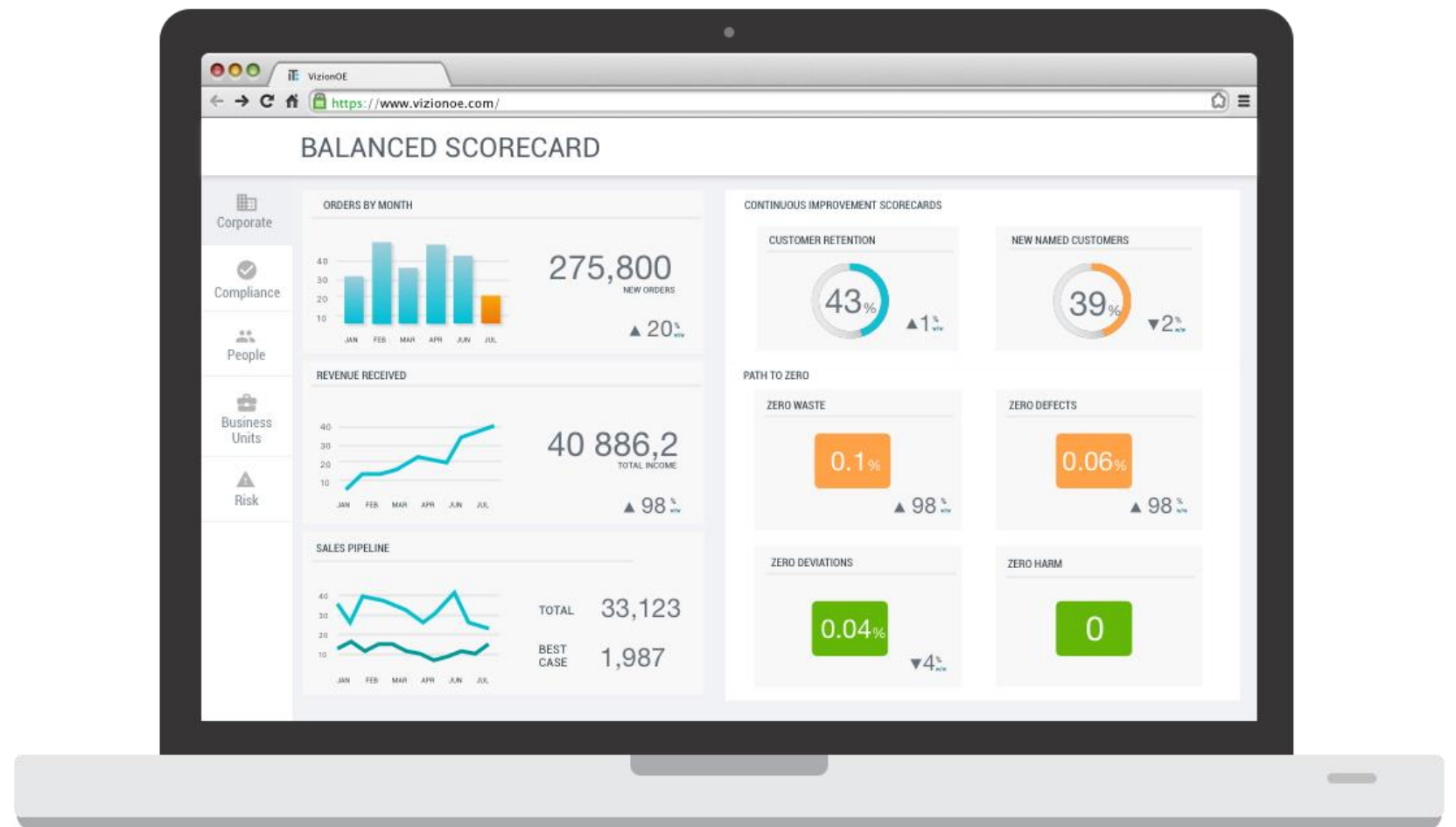


Vizion **OE**

Introducing v2.0 Features and Roadmap

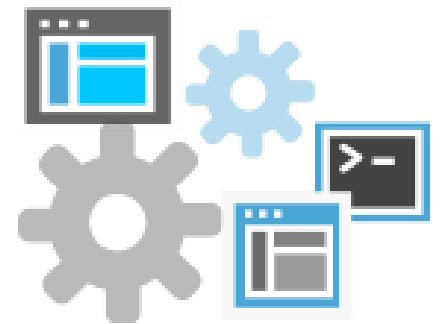
Enabling Operational Excellence

All your performance metrics, indicators, limit sets and targets, intelligently organized.



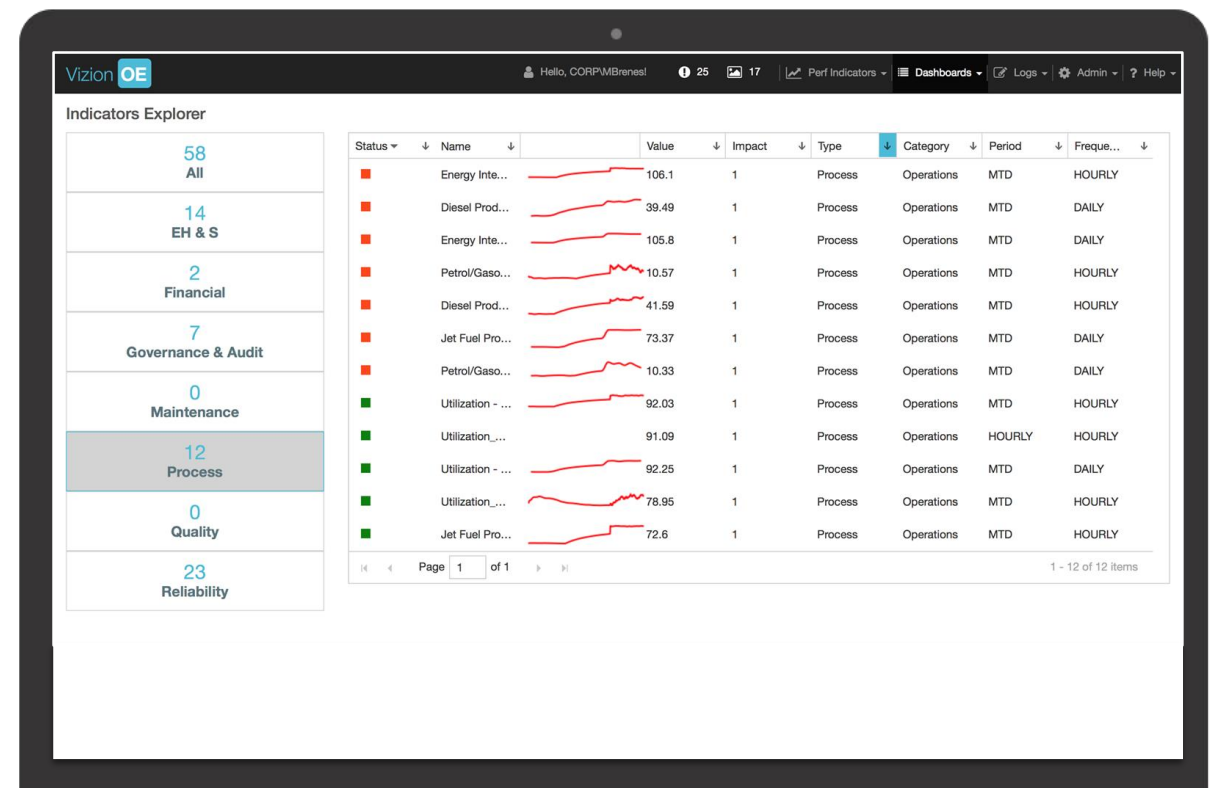
Key Problems with KPIs

- Poor timing - monthly, quarterly, annual
- Not actionable, no weighted significance
- Spread over too many isolated systems
- Lagging - damage already done
- Corporate level yet no link to strategic objectives
- No targets, limits, or benchmarks
- No drill down for troubleshooting
- Based on Real-time OR Relational OR manual data
- Difficult to set-up, manage and maintain



Why Vizion OE?

- ✓ Indicator definitions, Limits, Targets and Benchmarks
- ✓ From sensor & system to boardroom, in context
- ✓ Data source agnostic: real-time data + relational data + ERP + manual entry data
- ✓ Situational Awareness
- ✓ Analytics to focus on target gaps
- ✓ A simple, intuitive interface
- ✓ No delay waiting for out-of-date reports



Foster Continuous Improvement

- ✓ Create indicators for strategic objectives, sites, departments, functions, plant areas, roles, units, critical assets...
- ✓ Focus on significant target deviations and limit exceptions
- ✓ Monitor improvement over time
- ✓ Highlight areas of inaction
- ✓ Highlight ineffective action
- ✓ Monitor impact of actions and investments



Configure Indicators, Limits and Targets

Bulk load indicators with target and limit set definitions

HTML5 Web based forms to manually enter / update indicators, limits and target definitions

My Indicators dashboard mode – list of your indicators, status indication, link to detail view and analytics view

Add Performance Indicator

General

Indicator Name
UNIQUE IDENTIFIER

Indicator Description
A LONGER DESCRIPTION

Indicator Type
KPI

Owner
[User Icon]

Objective
MAXIMIZE

Priority
Select ...
Select ...
Impact 1
Impact 2
Impact 3
Impact 4

Collection Method
INSTRUCTIONS TO HELP COLLECT INFORMATION

Type
Select ...

Contexts

TARGETS

Targets

High Target

Source Type: VIZIONE, Value Tag: [empty]

Threshold Band (units): 0, Deadband (units): 0, Delay (sec): 0

Add Info, Enable

LIMITS

Limits

Owner: [User Icon], Data Entry Period: [Calendar Icon], Enable

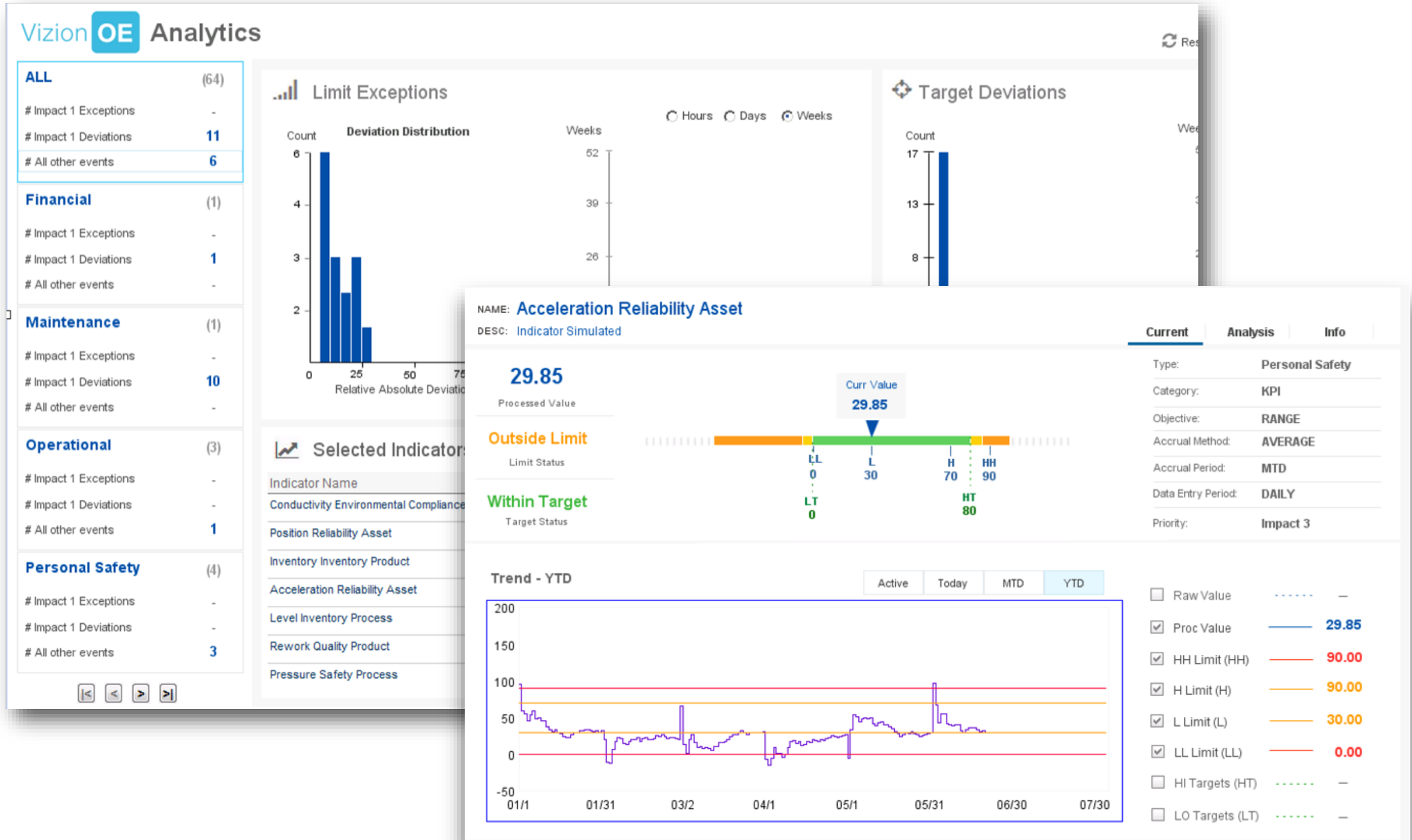
High Envelope Limit
Source Type: VIZIONE, Value Tag: [empty], Deadband (units): 0, Delay (sec): 15, Add Info, ON

High Guide Limit
OFF

Low Guide Limit
OFF

Low Envelope Limit
OFF

Actionable Information Deviation & Excursion Analytics



2.0 Enhancements

1. My Indicators
2. Bad Actors Analytics
3. Data Validation Support
4. More data sources Historians (PI DA or AF) or Relational Data sources
5. Ownership models
6. User Configurable Dashboards

1. My Indicators

My Indicators edit/update mode. Update targets, limits, manually enter indicator values, verify automatically collected values

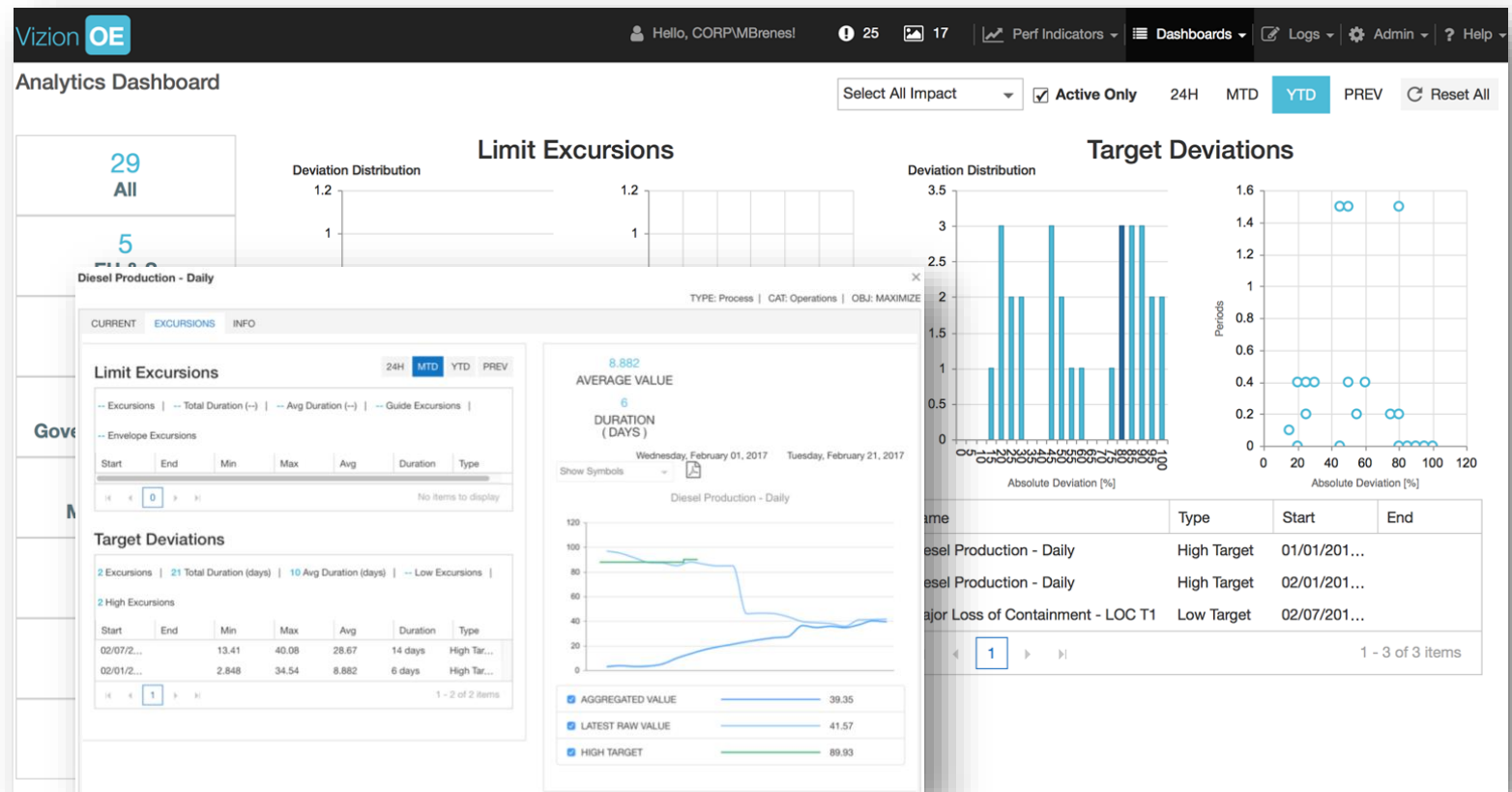
Indicator Name	Obj...	Accrual	Value	Focus Target	Low Target	High Target	Low Envelope	High Envelope	Low Guide	High Guide	Order
Utilization_Houston	MAXIMIZE	MTD	78.99	-	-		-	-	-	-	1
Utilization_Timisoara	MAXIMIZE	HOURLY	91.1	-	-		-	-	-	-	1
Total Recordable Incidents	MINIMIZE	YTD	0	-	0		-	-	-	-	11
Crack Spread	MONITOR	MTD	6.565	-	-		-	-	-	-	12
Days Away From Work	MINIMIZE	YTD	1	-	0		-	-	-	-	12
Petrol/Gasoline Market Price	MONITOR	MTD	26.26	-	-		-	-	-	-	12
Utilization - Hourly	MAXIMIZE	MTD	92.03	-	-	87	-	-	-	-	13
Utilization - Daily	MAXIMIZE	MTD	92.03	-	-	83.52	-	-	-	-	14

My Indicators dashboard mode – list of your indicators, status indication, link to detail view and analytics view

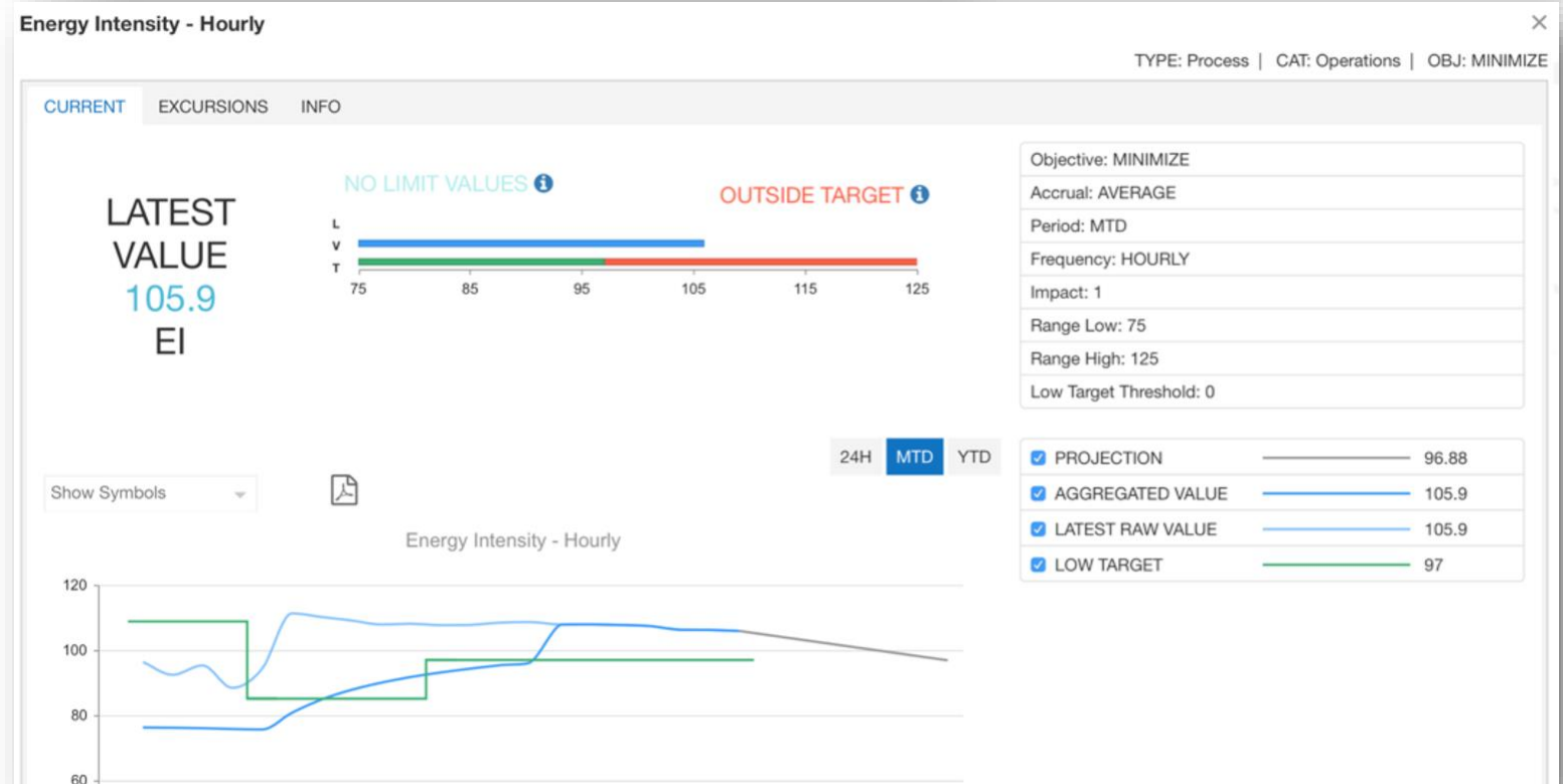
Status	Name	Value	Impact	Type	Category	Period	Frequ...
■	Energy Inte...	106.1	1	Process	Operations	MTD	HOURLY
■	Diesel Prod...	39.49	1	Process	Operations	MTD	DAILY
■	Energy Inte...	105.8	1	Process	Operations	MTD	DAILY
■	Petrol/Gaso...	10.57	1	Process	Operations	MTD	HOURLY
■	Diesel Prod...	41.59	1	Process	Operations	MTD	HOURLY
■	Jet Fuel Pro...	73.37	1	Process	Operations	MTD	DAILY
■	Petrol/Gaso...	10.33	1	Process	Operations	MTD	DAILY
■	Utilization - ...	92.03	1	Process	Operations	MTD	HOURLY
■	Utilization_...	91.09	1	Process	Operations	HOURLY	HOURLY
■	Utilization - ...	92.25	1	Process	Operations	MTD	DAILY
■	Utilization_...	78.95	1	Process	Operations	MTD	HOURLY
■	Jet Fuel Pro...	72.6	1	Process	Operations	MTD	HOURLY

2. Indicator analytics

Limit excursion/exceptions and target deviation bad actor analysis by groups and by time period.



Forecast Indicator results to anticipate future deviations and excursions



3. Data Validation Support

Verify if values, targets and limits are not updated when expected, are missing or bad quality.

The screenshot displays the Vizion OE Performance Indicators interface. The main table lists various indicators with columns for Name, Type, Category, Tag, Impact, and a status column with V and T buttons. A modal window is open for the 'Utilization - Hourly' indicator, showing a validation table with columns for Value Type, Type, Date, Value, and Comment. The modal also includes 'Save changes' and 'Next Missing Values' buttons, and a note to 'Enter a value between 75 and 100'.

Name	Type	Category	Tag	Impact	V	T	...
Utilization_Houston	Process	Operations	\\SERVER7\VOEDemo\ITV Refining\...	1	V	T	1
Utilization_Timisoara	Process	Operations	\\SERVER7\VOEDemo\ITV Refining\...	1	V	T	1
Total Recordable Incidents	EH & S	Personnel Safety		1	V	T	11
Days Away From Work	EH & S	Personnel Safety		1	V	T	12
Petrol/Gasoline Market Price	Financial	Market	##PIAF##Attribute Values##V##NO...	1	V		12
Utilization - Hourly	Process	Operations	\\SERVER7\VOEDemo\ITV Refining\...	1	V	T	13
Utilization - Daily							

Value Type	Type	Date	Value	Comment
Target	HI	01/01/2017 00:00:00		
Target	HI	12/01/2016 00:00:00		

4. Data Sources

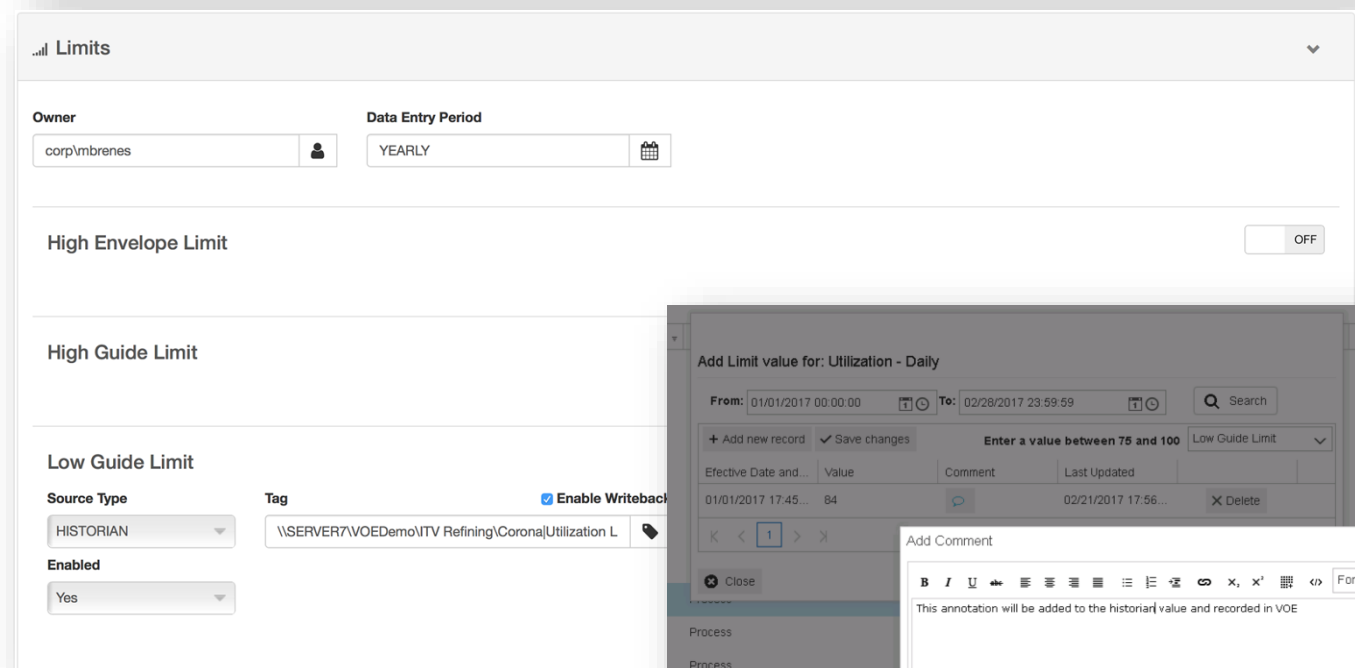
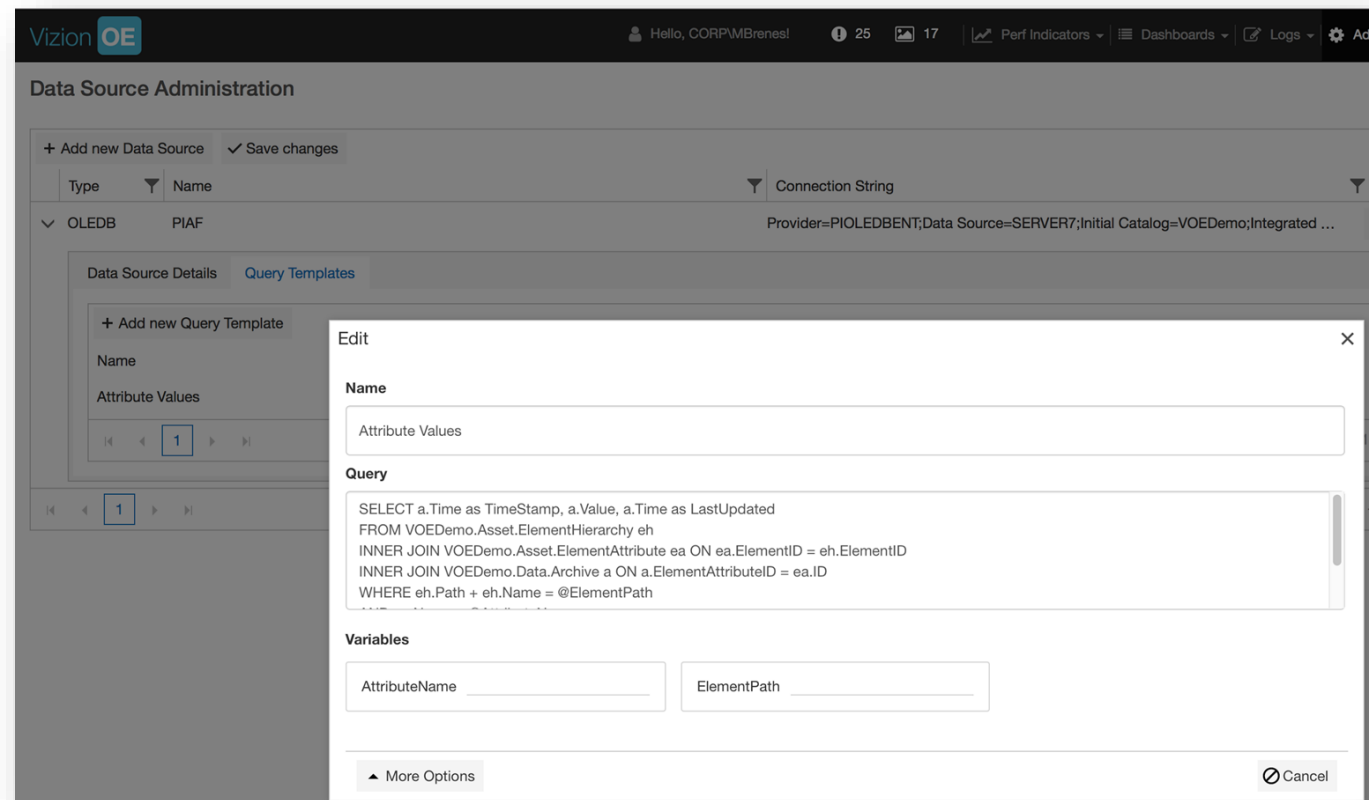
Relational Data store for limits, targets for manually entered values, limits and targets

Routine queries for automated values, limits and targets

Tag Historian as data source for values, limits and targets

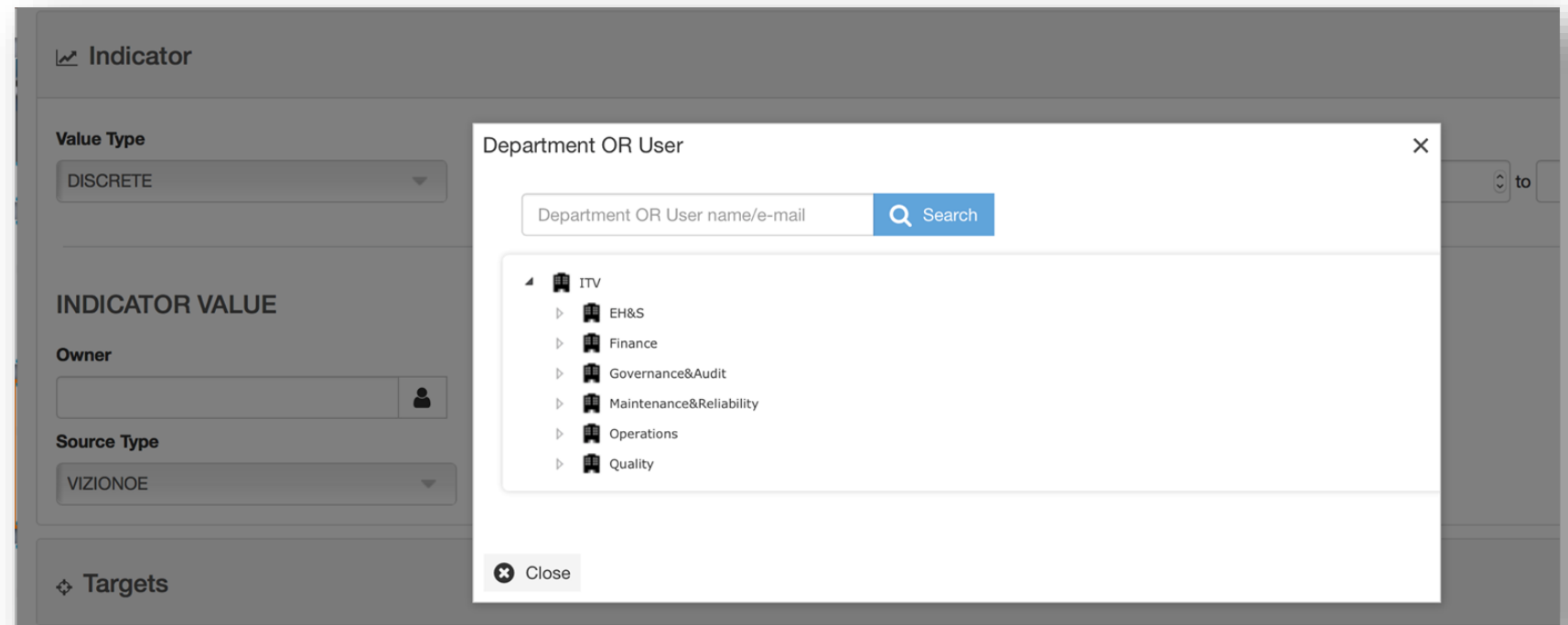
Data write back to tag option

Enhanced annotations



5. Indicator Ownership Enhancement

Integrated windows security group, and/or assign ownership according to the structure of your organization

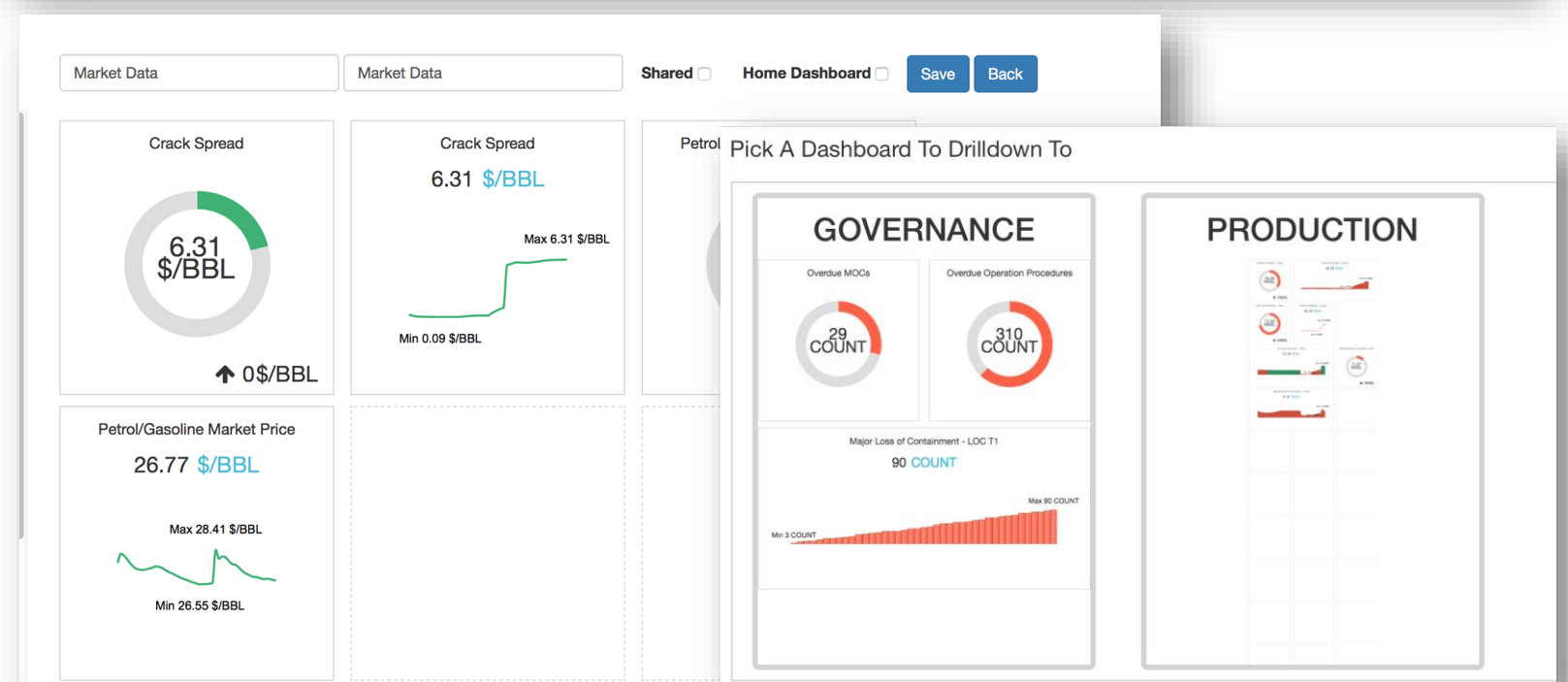
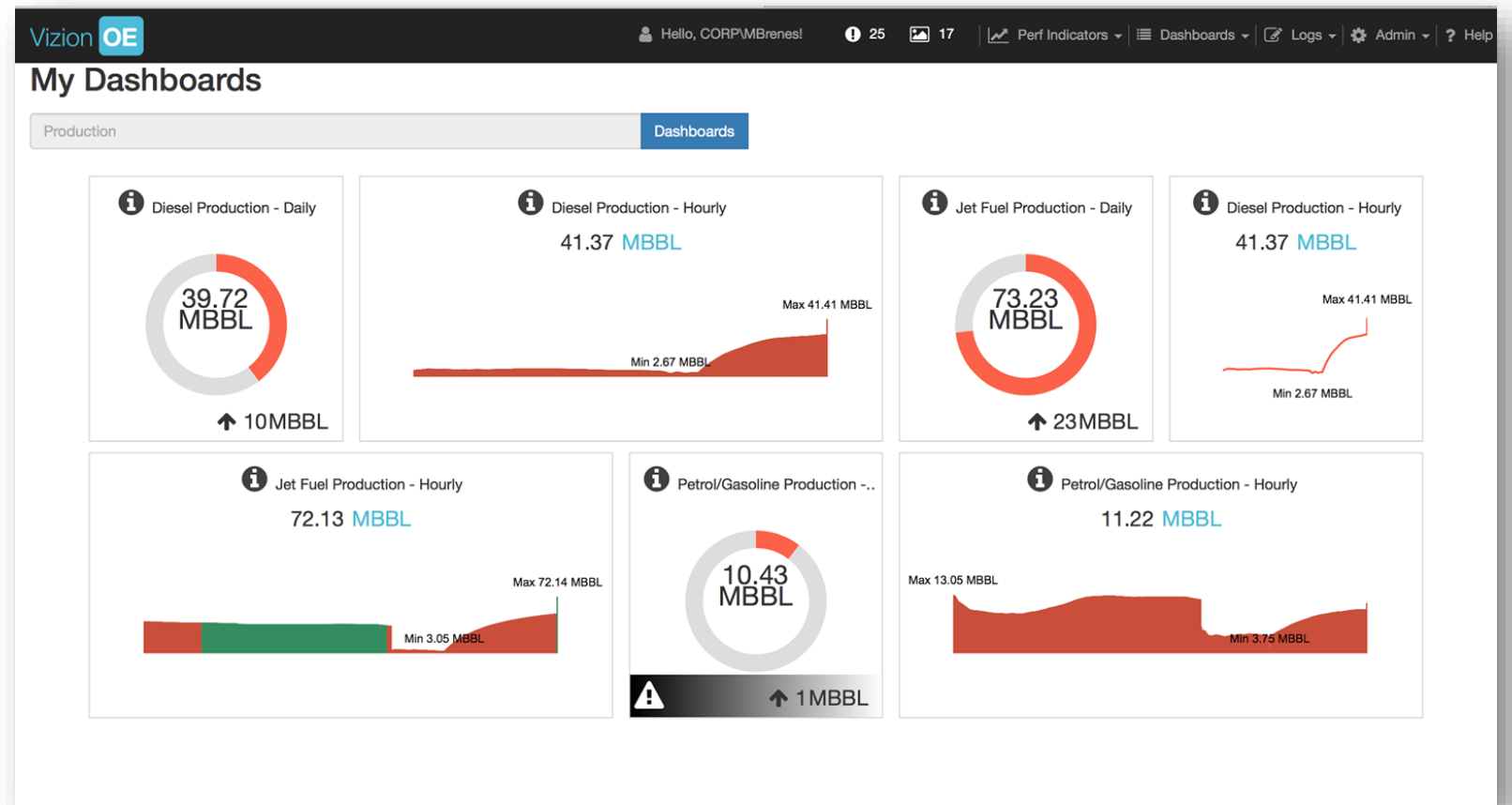


6. Dashboard Flexibility

Consume Indicators, limit excursions and target deviations in a HTML5 web based UI

User configurable, supports drill down

Layout and chart personalization



About Us



We specialize in **Operational Intelligence** and **Business to Real-time IT Solutions** in **Oil & Gas, Energy and Manufacturing**

CAPABILITIES

- Software Development and Maintenance
- IT Consulting & Project Services
- Managed Application Services
- Solution Support Services
- Onsite or Remote delivery

COMPETENCY

- Siemens XHQ
- OSIsoft PI Historian, Asset Framework (AF)
- BI, Analytics, Dashboard
- Oracle, SQL Server DBA and Development

DELIVERY CENTERS

California & Houston (USA), Timisoara (Romania)

Industrial Application Partnerships



THANK YOU!

Let's *start* the Journey!



itvizion.com

sales@itvizion.com

+1 951-256-4320